

ANTIQUE TOY WORLD

The Maloy Collection
December 13, 2025
EARLY TIN TOYS, BOATS, TRAINS





The World-Class Martin and Deborah Maloy Antique Toy and Train Collection Sets the Stage for Holiday Magic December 13 at Bertoia's

The Maloys' prized holdings include superb European tin toys, autos, boats and biscuit tins; Marklin and other rare European and American trains and accessories; airplanes, and tinplate wind-ups



VINELAND, N.J. – For 60 years, the late Martin “Marty” Maloy and his wife, Deborah, wholeheartedly embraced the antique toy hobby and became fixtures at high-profile shows, auctions and club events on both sides of the Atlantic. The couple’s gracious northern New Jersey residence became known to their fellow ATCA members as a haven for exquisite European tin toys, autos and boats; British figural biscuit tins, both European and American Ives trains and accessories; airplanes, wind-ups and many other wonderful rarities. On December 13, 2025, it will be the Bertoia family’s honor and pleasure to auction the Maloy collection at a live gallery event with all forms of remote bidding available.





The auction's flagship toy, a fabulous antique carrousel, is one of many Marklin treasures in the collection. It holds special meaning for Bertoia's president and principal auctioneer, Michael Bertoia, because of its prior ownership. "It was part of my father's personal collection," Michael said, referring to the late Bill Bertoia, a legendary antique toy dealer and co-founder of Bertoia Auctions. "Marty came to visit my parents at our then-family home in southern New Jersey and bought the carrousel straight from the collection. It's a fitting tribute to both Marty and my father that the carrousel leads this sale."

Marty amassed more than 100 fine-quality European transportation toys over the years, and it would be a fair statement to say that they were among his favorite pieces. The vehicles run the gamut of both land and air transportation, with a comprehensive selection that includes race cars, limousines, buses, trolleys, motorcycles and airplanes. Marklin, Carette, Bing and Ernst Plank are among the prestigious German manufacturers represented in this part of the collection.



Additional German wind-up tin toys include a few dozen Lehmanns (some with original boxes, such as Ikarus and Masuyama) and several early Gunthermann and Issmayer hand-painted wind-ups with whimsical themes of animals, musicians and circus performers. Among the other notable highlights are a large Gunthermann 8-man rowing scull and a German-made revolving carrousel with an unusual aviation theme. Its design incorporates suspended airships and, overhead, a wind-up airplane that powers the movement of the entire toy.





Armchair admirals can set sail with their choice of seaworthy craft from a fleet of beautifully-executed turn-of-the-20th-century toy boats and ships. At the forefront of the group is an exceptional example of a 2nd Series destroyer battleship Brooklyn. "In terms of condition, this might be Marty's finest boat," Michael said, "as it retains its original paint and has nearly all its original appointments, including cannons, masts, and more. Its condition and completeness go far beyond that of most Marklin nautical toys that might appear at auction." The Brooklyn is estimated at \$25,000-\$45,000.





Another standout, a flawlessly-scaled luxury paddle-wheeler is emblazoned with the name Philadelphia at each wheel cover. The boat has been professionally restored to the highest possible standard and would be a show-stopper on any collector's mantel. Its pre-sale estimate is \$8,000-\$16,000.

The diverse marine-toy category is rounded out by Bing battleships, live-steam riverboats, and a very early German merchant sailing ship, which Bertoia's experts have attributed to Lutz. The bow-wound clockwork ship has been professionally restored back to its original colorful hull and is complete with masts and sails.



American tin was another category that the Maloys collected with great enthusiasm. Their George Brown clockwork Circus Wagon, estimated at \$12,000-\$20,000, was displayed with the perfect companion piece; a two-sided original sketch of the toy in a sealed frame, \$6,000-\$10,000. “The two make a wonderful match. It would be great if the two could be kept together,” Michael observed.

George Brown is also the manufacturer of a completely original and untouched Broadway Avenue clockwork omnibus that displays elegant stenciling all over the wagon body. An especially artful design from the much-admired Connecticut toymaker’s workshop, it is expected to reach \$4,000-\$8,000 on auction day.



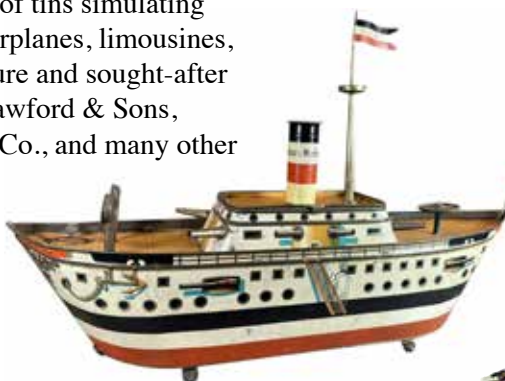


In keeping with the Maloys' animal-loving nature, the auction includes an extensive menagerie of elusive animal platform toys, including a cow, a camel, a Fallows articulated pig farmer and many others.

Also gracing the American tin toy section is an Althof Bergman standout, an ultra-rare Children at Maypole. As the name suggests, this toy – which is spectacularly well preserved – features children spinning around a maypole as the toy propels forward.

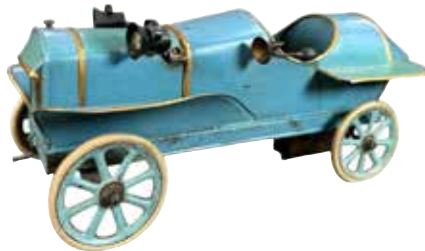


When some collectors hear the name “Maloy,” they automatically think of walls lined with colorful early-20th-century biscuit (cookie) tins. Deborah Maloy astutely formed one of the largest and finest biscuit tin collections anywhere on Earth. Marty enthusiastically joined Deborah in her pursuit of the charming novelty product containers, setting his own particular focus on biscuit tins with a transportation theme. Their joint effort resulted in an extraordinary toy-crossover collection of tins simulating double-decker buses, trolleys, boats, airplanes, limousines, fire trucks, baby prams and other obscure and sought-after novelties from Huntley & Palmers, Crawford & Sons, McVitie & Price, Macfarlane, Lang & Co., and many other British commercial bakeries.





Finally, the Maloy collection is replete with top-tier trains – the crème de la crème – including rare Marklin, Bing and Carotte productions in gauges ranging from 0 to 2. The live-steam locomotives, German bridges and glass canopies; Ives lithographed stations and accessories; early trolleys and beautifully hand-painted and decorated coaches are sure to command the attention of toy train enthusiasts the world over.



The December 13, 2025 Signature Sale featuring the Martin and Deborah Maloy Collection will be held live at Bertoia's gallery located at 2141 DeMarco Drive, Vineland, NJ 08360, starting at 10AM ET. Toys may be previewed the week before the auction by appointment only. Other bidding options include absentee, by phone, or live online through Bertoia Live, LiveAuctioneers or Invaluable.

For additional information on any item, to leave an absentee bid, schedule a private preview appointment, reserve a telephone line for bidding, or discuss consigning to a future auction at Bertoia's, call 856-692-1881, email toys@bertoiiauctions.com. Watch for auction updates on Bertoia's website: www.bertoiaauctions.com. Download Bertoia's free app through the Apple Store or Google Play (for Android) and place bids or manage your account from anywhere.





Bringing the best of antique collectibles to the best of collectors.
Hosting the finest specialized auctions since 1986.
Accepting quality consignments, single items or collections.



AUCTION INFORMATION
BertoiaAuctions.com

2141 DEMARCO DRIVE VINELAND NJ 08360 PHONE: 856-692-1881



The Maloy Collection
December 13, 2025
EARLY TIN TOYS, BOATS, TRAINS

AUCTION INFORMATION
BertoliaAuctions.com

2141 DEMARCO DRIVE VINELAND NJ 08360 PHONE: 856-692-1881